

# *Abra prismatica* (Montagu, 1808)

AphiaID: 141436

Animalia (Reino) > Mollusca (Filo) > Bivalvia (Classe) > Autobranchia (Subclasse) > Heteroconchia (Infraclasse) > Imparidentia (Superordem) > Cardiida (Ordem) > Tellinoidea (Superfamilia) > Semelidae (Familia)



Rainer Borchering - Schutzstation Wattenmeer, via beachexplorer.org

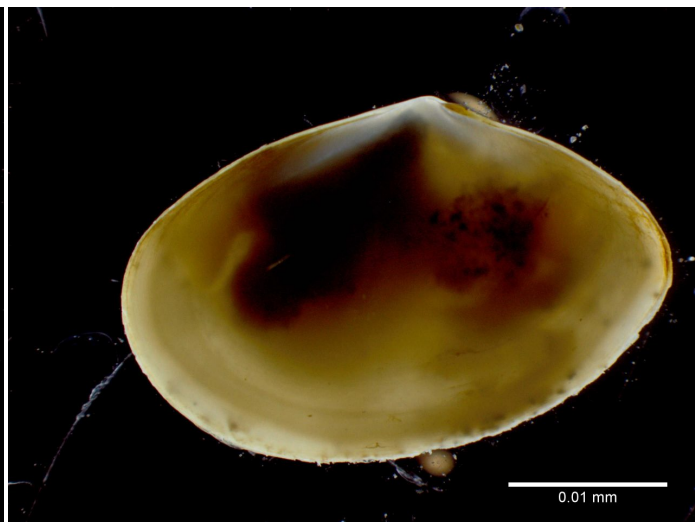


*Abra prismatica*  
Northern North Sea  
NMR 41121. Actual size 18 mm

Natural History Museum Rotterdam via WoRMS



© Marta Martins - CIIMAR



© Marta Martins - CIIMAR / Abr. 17 2019

## Sinónimos

*Abra fragilis* Risso, 1826

*Abra milashevichi* Neveeskaja, 1963

*Erycina aradae* Biondi, 1859

*Ligula prismatica* Montagu, 1808

*Psammotaea striata* O. G. Costa, 1830  
*Syndesmya fragilis* Milachewitsch, 1916

## Referências

---

basis of record Gofas, S.; Le Renard, J.; Bouchet, P. (2001). Mollusca. in: Costello, M.J. et al. (eds), European Register of Marine Species: a check-list of the marine species in Europe and a bibliography of guides to their identification. Patrimoines Naturels. 50: 180-213. [\[details\]](#)

additional source Huber, M. (2010). Compendium of bivalves. A full-color guide to 3,300 of the world's marine bivalves. A status on Bivalvia after 250 years of research. Hackenheim: ConchBooks. 901 pp., 1 CD-ROM. [\[details\]](#)

context source (BeRMS 2020) Bio-environmental research group; Institute of Agricultural and Fisheries research (ILVO), Belgium; (2016): Macrobenthos monitoring in function of aggregate extraction activities in the Belgian part of the North Sea. [\[details\]](#)

Última atualização: 21 Jul. 2017